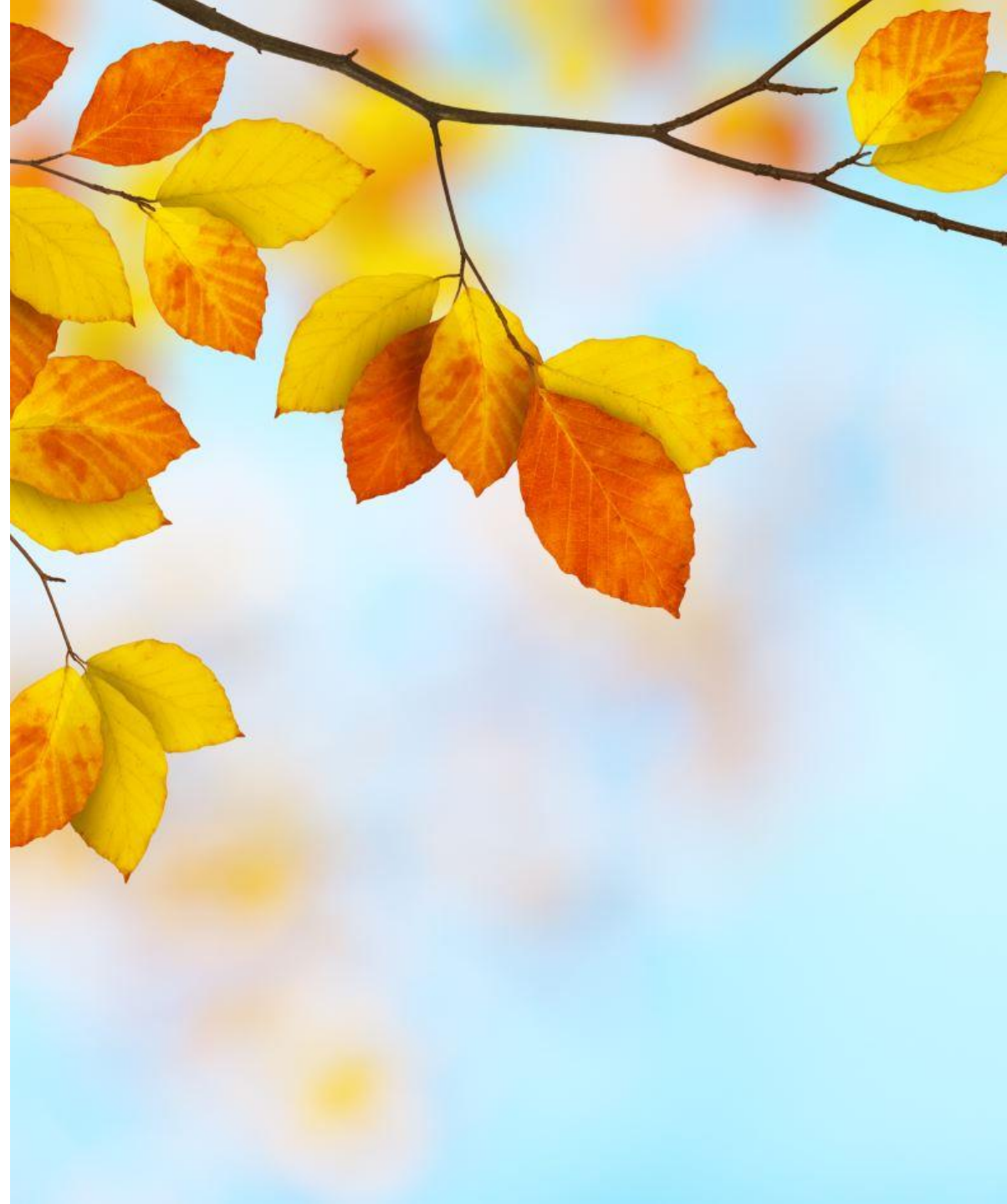

NAVIGATING THE HS PROCESS - COVID EDITION

Fall 2020

Carolina Blazkow

School Counselor



TODAY'S AGENDA



- ❑ 8th grade choices
- ❑ How do I make the right decision for my child?
- ❑ Timelines throughout Middle School
- ❑ Catholic High Schools Admissions Process
- ❑ CPS Application Process
- ❑ Test Preparation Programs

WHERE DID LAST YEARS 8TH GRADERS CHOSE?

- DePaul (15)
 - Lane Tech (8)
 - Ignatius (6)
 - Loyola (4)
 - Glenbrook South (2)
 - Glenbrook North (1)
 - Northside (1)
 - Notre Dame (1)
 - Lincoln Park (1)
 - Holy Trinity (1)
 - Beacon Academy (1)
-

WHERE DO OUR 8TH GRADERS GET INTO?

- Lane Tech
 - Loyola
 - Ignatius
 - DePaul
 - Northside
 - Amundsen
 - Fenwick
 - Resurrection
 - Notre Dame
 - Whitney Young
 - Regina
 - Schurz
 - Coal City
 - California
 - Mother McAuley
 - St. Patrick
 - Trinity
 - Holy Trinity
 - Guerin
 - Walter Payton
 - Lincoln Park IB
 - Niles North
 - Von Steuben
 - Taft IB
 - Lakeview
 - Westinghouse
 - Disney II
 - Beacon Academy
 - GBN
 - GBS
-



**THERE IS A RIGHT HIGH SCHOOL
FOR EVERY CHILD**



HOW DO I MAKE THE RIGHT DECISION?

- Be **thoughtful** and **realistic** when viewing your child's gifts, talents and strengths
 - What does your child need in a high school?
 - Be **mindful** of the stress and pressure this process has on your child (and your family)
 - There is a right school for your child. There are many options
 - Register or attend open houses – get a feel for the Academic Program and school culture
 - Virtual open house dates on the St. Ben's HS Readiness page (also linked in the BUZZ)
 - Check out events/athletic camps/plays/tune into sporting events
 - Register for individual/small group visits (CPS does not allow shadow days)
 - [High School Search/Interest Checklist](#)
-



TIMELINES

Who

What

When

Where

MS TIMELINE 7TH GRADE

All year: concentrate on schoolwork (standardized tests and school grades)

All year: Solidify relationships form potential recommendation providers

All year: View high school viewbooks, subscribe to schools of interest's mailing lists

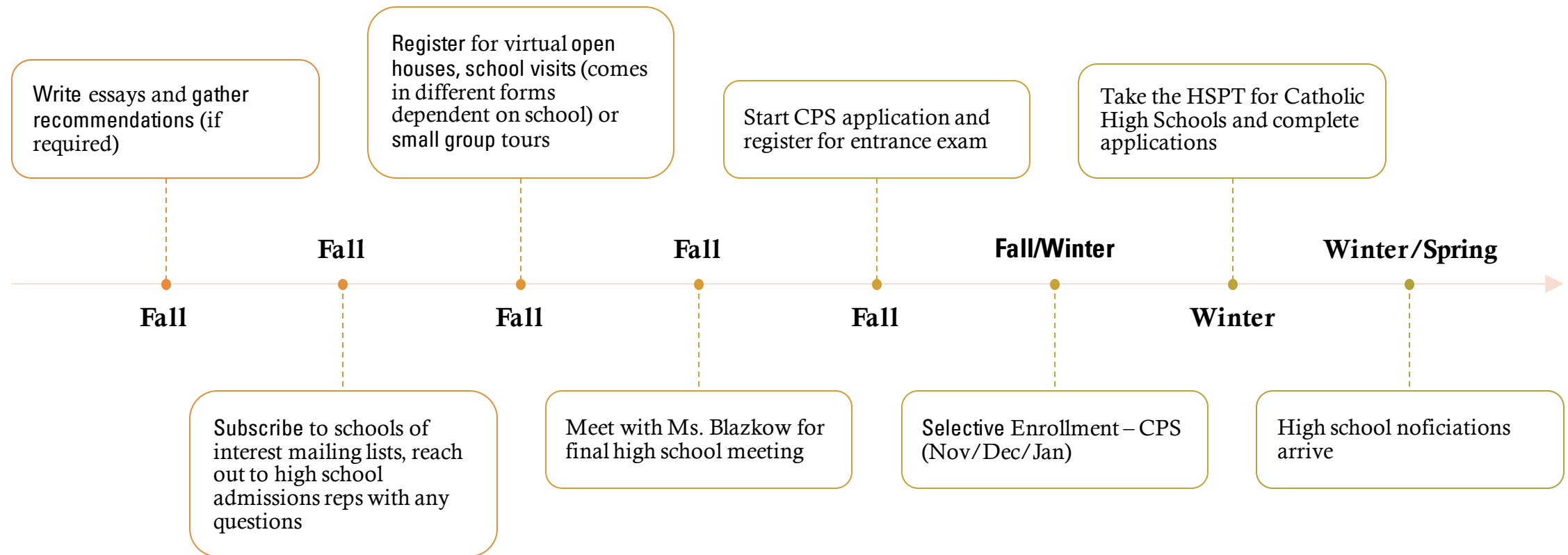
Fall: Register for open houses and other admissions events (if available)

Spring: Register for NWEA MAP test for CPS (May/June)

Spring: Meet with Ms. Blazkow for high school meeting

- Testing process
- Application overview/timeline
- Exploring high school options

MS TIMELINE – 8TH GRADE





THE APPLICATION PROCESS

CATHOLIC HIGH SCHOOLS

- **The Catholic High School Entrance Exam will be administered on Saturday, December 5, 2020 at 8 a.m.** Students may register for the test beginning on November 13, 2020. Consult the Catholic high school where the student wishes to enroll for the 2021/22 school year for information on the pre-registration process. The entrance exam fee is \$25 payable either by cash or check to the school administering the exam.
- **HSPT (High School Placement Test)** : Verbal, Quantitative Reasoning, Reading, Math, Language Skills
- **How do I apply to a Catholic high school?**
 - All 8th grade students, with few exceptions, apply to a Catholic high school by taking the high school entrance exam in December. Students should take the exam at the Catholic high school they wish to attend. You may only take the high school entrance exam one time. After taking the high school entrance exam, you will be asked to submit additional information to the high school where you took the exam to complete your application process
- **How many schools can I apply to?**
 - You may only apply to **one** Catholic school at a time
- For example, say you apply to school A by taking the high school entrance exam at School A. If you later want to apply to School B, you must request that your exam scores be sent from School A to School B. This means that you are now applying to School B and you are no longer applying to School A.

CHANGES DUE TO COVID

- Open houses are **virtual**
- Virtual visits, individual/small group in-person visits (by appointment), school viewbooks available
- **No shadowing**, above opportunities are in place of shadow days
 - **Allowed one excused "shadow day"**
- Multiple tests dates being offered for certain schools (**Dec 5**, Dec 12, TBA)
 - Testing is either on campus or virtual
 - On campus – safety procedures: masks, social distancing, morning wellness check, assigned seating, contact info, parents/family cannot enter building
- Pre-registration starting Nov. 13
 - Visit website of top choice school
 - Submit any service plans, IEPs, 504s to school (upload with registration or email to admissions)
- Schools looking at 6th, 7th, and 8th grade final grades (continued)



What documents do the Catholic schools require as part of their application:

Access to all Catholic high school applications is provided on the day of the exam (Saturday, December 5, 2020). All of the applications are online with capabilities to upload necessary documents.

DePaul College Prep-

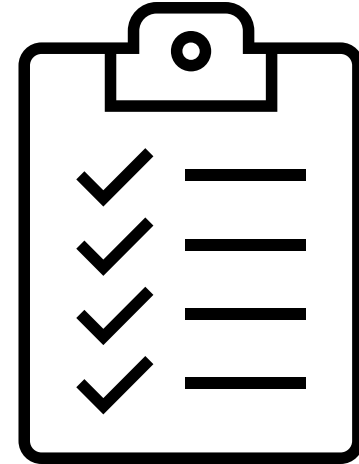
- 6th grade report card and Aspire scores
- 7th grade report card
- 8th grade first trimester report card
- Conduct report completed by St. Ben's

Loyola

- 6th grade report card and Aspire scores
- 7th grade report card
- 8th grade first trimester report card

Saint Ignatius

- 6th grade report card and Aspire scores (can include MAP scores taken in 7th or 8th grade)
 - 7th grade report card
 - 8th grade first trimester report card
 - Two recommendation letters. One from a teacher and the second is asking for character reference and should be completed by a non-family member who knows your child (ie:coach/instructor, neighbor, long-time friend of the family)
-



CPS HIGH SCHOOLS

APPLICATION OPEN – OCTOBER 12, 2020

APPLICATION DEADLINE - DECEMBER 11, 2020

THE HIGH SCHOOL APPLICATION PROCESS IS DIVIDED INTO FIVE PHASES:



LEARN

May – Oct

SEARCH

June– Oct

EXPLORE

Aug – Oct (R1)
April (R2)

APPLY

Oct– Dec (R1)
April (R2)

SELECTION

March – June

CPS HIGH SCHOOLS

Selective enrollment schools

- Designed for academically advanced students. Honors/AP courses
- **Based on 900-point scale**
 - **NWEA MAP scores (300 points)**
 - **7th grade core subject cumulative grades (or average) (300 points)**
 - **Admissions exam (300 points)**
 - Send any services plans, IEPs, 504s to oaetestingteam@cps.edu.
 - [Point calculation tool](#)
 - [CPS rubric](#)
 - [CPS cut scores 20-21](#)
- **Principal Discretion**
 - It allows principals of selective enrollment high schools to fill a certain number of seats outside of the selection process
 - Takes place in March – after the initial acceptance letters have been sent. Students notified of decision in May
- **What CPS schools are selective enrollment?**
 - Lane Tech, Walter Payton, Jones College Prep, Northside College Prep, Whitney Young

CPS HIGH SCHOOLS



International Baccalaureate high schools

- The International Baccalaureate aims to develop inquiring, knowledgeable and caring young people who help to create a better and more peaceful world through intercultural understanding and respect. To this end, the organization works with schools, governments and international organizations to develop challenging programs of international education and rigorous assessment. These programs encourage students across the world to become active, compassionate and lifelong learners who understand that other people, with their differences, can also be right.
- **Students are selected based on an overall applicant score**
 - NWEA (450 points)
 - 7th grade report card grades in reading, math, science, and social studies (450 points)
 - No NOT need to attend IB informational session this year (COVID)
- Each IB high school selects a minimum cutoff score for selections and applicants meeting or exceeding this score will receive an offer
 - [IB Scoring Rubric](#)
- **What CPS schools are IB?**
 - Lincoln Park, Senn, Amundsen, Schurz

CPS HIGH SCHOOLS

Magnet High Schools

- These schools offer specialty programs: fine/performing arts, engineering, agricultural sciences
- Computerized lottery
- Siblings are accepted first
- Senn Fine & Performing Arts
 - Audition (virtual)/portfolio is required. Eligible students selected through this process.
- Von Steuben (Science & Scholars) Program
 - Scholars program requires minimum GPA of 3.0, minimum percentile of 60 in reading and math on NWEA MAP
 - Teacher recommendation and essay
- **What CPS schools are Magnet?**
 - Von Steuben, Disney II, Senn

CHANGING YOUR PROGRAM RANKINGS

- Start an application on go.CPS.edu
- On the application, you will be able to select and rank up to **20 choice schools and up to 6 selective enrollment schools** (if eligible)
 - You can make changes to your school choices and re-rank your schools up until **February 1st**
- Keep researching, viewing schools viewbooks/open houses, and talking to school leaders after you submit to make sure you've made the best selection and ranking choices



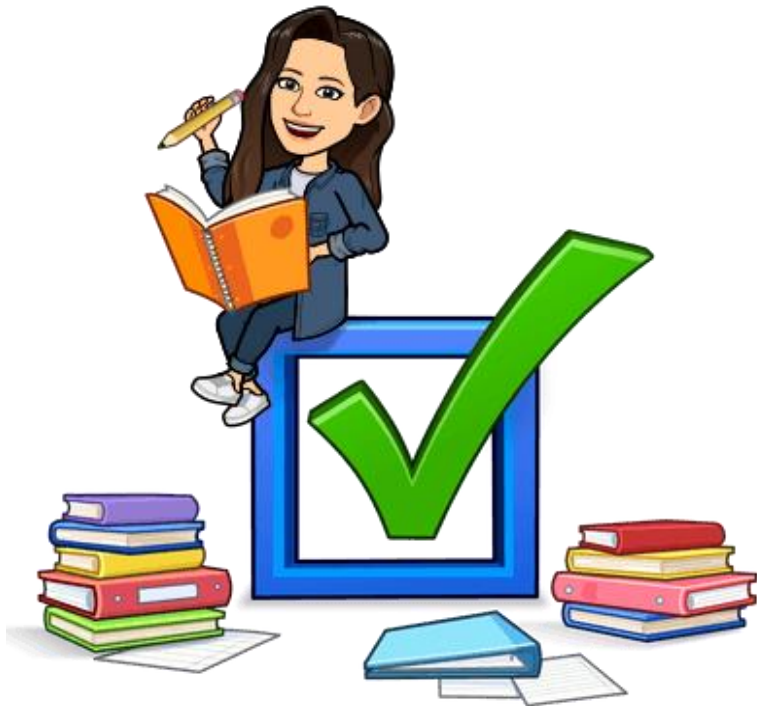
UPDATES DUE TO COVID

- **8th grade** – those who are eligible for selective enrollment can **re-take** the NWEA MAP test in the **winter**
 - **7th grade** – NWEA MAP testing is still on for Spring 2021, May/June
 - No IB session required for admissions
 - Except for the Selective Enrollment High School exam, all admissions screenings will be conducted virtually for the 2021-2022 application season. [CLICK FOR DETAILS](#)
 - [CPS OPEN HOUSE EVENTS](#)
 - [GO.CPS APPLICATION UPDATES](#)
 - **Please check this section frequently for the most updated application timelines as the COVID-19 situation evolves**
 - **Subscribe to mailing list**
 - [CPS Process Changes](#)
-

TEST PREP

- **Test prep is 100% optional** and a decision made by the family
 - **There will be no test prep held this year at St. Ben's – no additional outside providers**
 - Below are linked test prep companies that SBPS families have used in the past, with several being one-on-one test prep. These companies (aside from Selective Prep) prep for both the NWEA MAP and HSPT. Several offer selective enrollment prep.
 - [Selective Prep](#) - Group, NWEA MAP, Selective Enrollment (Virtual)
 - [Leewood Learning](#)- Individual, HSPT
 - [Nurturing Wisdom](#) - individual, HSPT, NWEA MAP, Selective Enrollment
 - [Test Prep Chicago](#) - Individual, HSPT, NWEA MAP, Selective Enrollment
 - [World Wise Tutoring](#) - individual, HSPT, NWEA MAP (virtual)
-

TO DO & REMINDERS



- **Activate** your account (sent by CPS)
- **Review** your eligibility for Selective Enrollment
- **Understand** the application process
- **Research** high school programs
- **Subscribe** to CPS and school newsletters
- **Talk** to Ms. B, talk to Ms. D
- **Register** for virtual open house events, visits, and other events available
- **Visit** school neighborhoods/routes
- **Narrow your choices.** Have a clear list of top 1-4 choices. Don't choose all Ivy Leagues!
- **Make a list** of what is important in a high school
 - Make notes of high schools and what they have to offer
 - Make note of interests and what is important to **you** in a school
- **Make the most of it**

Links to High Schools

[Amundsen High School](#)

- IB Program

[Lane Tech College Prep](#)

- Selective Enrollment

[Walter Payton College Prep](#)

- Selective Enrollment

[Whitney Young](#)

- Selective Enrollment

[Northside College Prep](#)

- Selective Enrollment

[Lincoln Park High School](#)

- Double honors, IB program

[Jones College Prep](#)

- Selective Enrollment

[Von Steuben High School](#)

- Magnet

[DePaul Prep](#)

- Co-ed

[Loyola Academy](#)

- Co-ed

[St. Ignatius](#)

- Co-ed

[Fenwick High School](#)

- Co-ed

[Notre Dame College Prep](#)

- All boys

[St. Patrick High School](#)

- All boys

[Resurrection College Prep](#)

- All girls

[Regina Dominican](#)

- All girls

[Trinity High School](#)

- All girls

Resources



Catholic High School Info

- [Catholic School List and Resources](#)
- [Catholic High School Search](#)
- [Entrance Exam FAQs](#)

CPS High School Info

- [GoCPS High School Page](#)
- [GoCPS Main page](#) (subscribe to newsletters)
- [Informational Document](#)
- [Cutoff Scores & Scoring Rubrics](#)
- [Application Tips](#)
- [CPS Myth Busters](#)
- [CPS Tier Process](#)
 - [Find your tier map](#)

Additional Resources

- [High School Bound](#)
- [Choosing the Right High School](#)
- [Choosing a School for Your Child](#)
- [Tips for Helping Your Teen Transition to High School](#)
- [Preparing Students for the Transition to High School](#)

HIGH SCHOOL
BOUND



St. Ben's HS Readiness Page Resources

- [High School News & Events](#)
- [CPS Updates](#)
- [Catholic Schools Updates](#)
- [HS Readiness Student Timelines](#)

Visit the [SBPS High School Readiness webpage](#) for more resources!