

NAVIGATING THE HIGH SCHOOL PROCESS

FALL 2023

Ms. Blazkow, School Counselor



TONIGHT'S AGENDA

1

8TH GRADE
HS
DECISIONS

2

RESEARCHING/
WEIGHING
OPTIONS

3

TIMELINES

4

CATHOLIC
HIGH
SCHOOLS

5

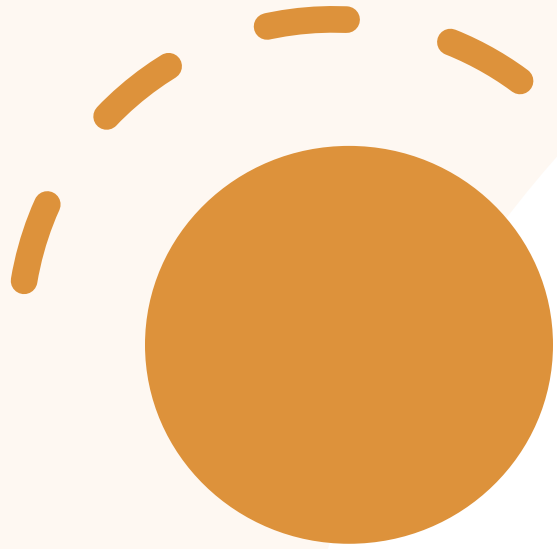
CPS

6

TEST PREP &
RESOURCES

WHERE
DID LAST
YEAR'S
8TH
GRADERS
CHOOSE?

- DePaul – 30
- St. Ignatius – 9
- Loyola – 8
- St. Pats – 2
- Notre Dame – 1
- Resurrection - 1
- Northside – 3
- Walter Payton – 2
- Lane – 9
- Lincoln Park – 2
- Amundsen – 2
- Taft - 1
- York High School – 2
- Glenbrook South - 1



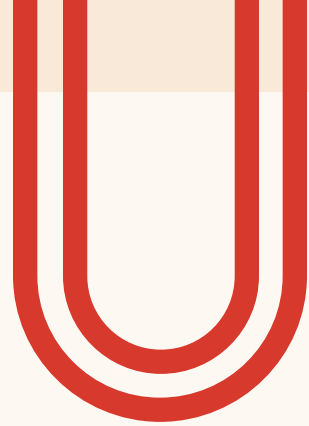
THERE IS A RIGHT
HIGH SCHOOL FOR
EVERY CHILD

HOW DO I MAKE THE RIGHT DECISION?

- Be **thoughtful** and **realistic** – view/make a list of your child’s gifts, talents and strengths
- What does your child **need** in a high school?
- Be **mindful** of the stress and pressure this process has on your child (and your family)
- There is a **right school for your child** – there are MANY options
- Register/attend open houses – get a feel for the Academic Program and school culture
 - Visit high school of interest for open house dates
- Check out events/athletic camps/plays/sporting events
- Register for shadow days (Catholic schools only, CPS no shadow days)
- [High School Search/Interest Checklist](#)



**2023-2024
APPLICATION
TIMELINE**



APPLICATION TIMELINE

**CPS APPLICATION
OPENS**

Wednesday, September 13th @
10am

**CPS APPLICATION
CLOSES**

Thursday, November 9th @ 5pm

**CATHOLIC ENTRANCE
EXAM REGISTRATION**

Mid-November

**CATHOLIC SCHOOL
DECISIONS RELEASED**

Before February 1st, 2024

**CPS ENTRANCE EXAM
(HSAT)**

Saturday, October 14th,
Sunday, October 15th,
Saturday, October 21st

**CPS RE-RANK
DEADLINE**

Wednesday, November 22nd

**CATHOLIC ENTRANCE
EXAM (HSPT)**

Saturday, December 2nd @ 8am

**CPS DECISIONS
RELEASED**

March/April 2024

TO-DO LISTS

- **8th grade**

- Subscribe to schools of interest mailing lists
- Subscribe to CPS newsletter
- Obtain Letters of Rec (if required)
- Open houses/shadow days
- Meet with Ms. Blazkow for high school meeting
- Test prep (optional)

- **7th grade**

- Concentrate on schoolwork (iReady and school grades)
- Solidify relationships from potential recommendation providers
- Shadow days (in Spring)
- Open houses
- Test prep (optional)

CATHOLIC HIGH SCHOOL ADMISSIONS

CATHOLIC HIGH SCHOOLS

- The Catholic High School Entrance Exam will be administered on **Saturday, December 2, 2023 at 8 a.m.** Students may register for the test beginning in November 2022. Consult the Catholic high school where the student wishes to enroll for the 2024/25 school year for information on the pre-registration process. The entrance exam fee is \$25 payable either by cash or check to the school administering the exam.
- **HSPT (High School Placement Test)** : Verbal, Quantitative Reasoning, Reading, Math, Language Skills
- **How do I apply to a Catholic high school?**
 - All 8th grade students, with few exceptions, apply to a Catholic high school by taking the high school entrance exam in December. **Students should take the exam at the Catholic high school they wish to attend.** You may only take the high school entrance exam one time. After taking the high school entrance exam, you will be asked to submit additional information to the high school where you took the exam to complete your application process
 - Very few schools allow you to transfer your scores to another Catholic high school if you are NOT accepted to your first choice. Some Catholic high schools will not accept transferred test scores because of their competitive status (Loyola, St. Ignatius, DePaul). If you wish to apply to these schools, you **MUST** take the entrance exam at their school.
- **How many schools can I apply to?**
 - You may only apply to **one** Catholic school at a time
- For example, say you apply to school A by taking the high school entrance exam at School A. If you later want to apply to School B, you must request that your exam scores be sent from School A to School B. This means that you are now applying to School B and you are no longer applying to School A.
- [High School Locator](#)

WHAT DO CATHOLIC HIGH SCHOOLS LOOK AT?

7th-grade grades/marks and first trimester of 8th grade (the entire report card is sent to the high school)

7th-grade iReady results (could send in 8th grade Fall iReady scores along with 7th grade)

Entrance Exam (HSPT)

Strong attendance in 7th grade and 1st half of 8th grade

Acceptable tardy record

Strong participation and good conduct reports

Some narratives from the parents and students may be required (Ignatius)



Explore

SUMMER 2023

- Create an account and a family profile.
- Find your neighborhood school and tier using the school locator.
- View school profiles with detailed background, contact, performance, program, and admissions data.



Apply

FALL 2023

- Attend virtual or in-person open house events.
- Select and rank the schools and programs to which you'll apply.
- Submit your application.



Selection

SPRING 2024

- Receive offers from schools you applied to, if applicable, and accept or decline them.
- Participate in the Waitlist process if applicable.

CPS

TYPES OF CPS HIGH SCHOOLS

- **Selective Enrollment schools**
 - Designed for academically advanced students (Honors/AP courses)
 - Based on a 900-point scale
 - 7th grade core subject cumulative grades (450 points)
 - HSAT (450 points): Reading and Math*
 - 1 hour time limit*
 - Each school has their own cut-off scores
 - Send any IEPs or 504s to oaetestingteam@cps.edu (or add onto app)
 - Principal Discretion
 - Allows principals of selective enrollment high schools to fill a certain number of seats outside of the selection process
- **What CPS schools are selective enrollment?**
 - Lane Tech, Walter Payton, Jones College Prep, Northside College Prep, Whitney Young, Brooks, Hancock, Lindblom, King, South Shore, and Westinghouse

TYPES OF CPS HIGH SCHOOLS

- **International Baccalaureate high schools (IB)**
 - The International Baccalaureate aims to develop inquiring, knowledgeable and caring young people who help to create a better and more peaceful world through intercultural understanding and respect. To this end, the organization works with schools, governments and international organizations to develop **challenging programs of international education and rigorous assessment**. These programs encourage students across the world to become active, compassionate and lifelong learners who understand that other people, with their differences, can also be right.
 - Students are selected based on an overall applicant score
 - Each IB high school selects a minimum cutoff score for selections and applicants meeting or exceeding this score will receive an offer
- **What CPS schools are IB?**
 - Lincoln Park, Senn, Amundsen, Schurz, Clemente, and Ogden

TYPES OF CPS HIGH SCHOOLS

- **Magnet High Schools**
 - These schools offer specialty programs:
Fine/performing arts, engineering, agricultural sciences
 - Computerized lottery
 - Siblings are accepted first
 - On the go.CPS application, it will be listed what is required along with the application (under event scheduling)
 - Audition, portfolio, letters of recommendation, essays
- **What CPS schools are Magnet schools?**
 - Von Steuben, Disney II, Senn, ChiArts

CHANGING/ RANKING CPS CHOICES

Start an application on go.CPS.edu

On the application, you will be able to select and rank up to **20 choice schools** and up to **6 selective enrollment schools**

You can **ADD** more schools until November 9th

You can re-rank (but not add) schools up until November 22

Keep researching, viewing schools, going to open houses, and talking to school reps after you submit to make sure you've made the best selection and ranking choices

CPS ADMISSIONS FACTORS

- Students are considered for available program seats based on a combination of the following factors:
 - The order that they **ranked** each program on their application
 - The number of **seats available** in each program
 - Each program's selection process (lottery or point system)
 - Whether any priority preferences are considered (e.g., siblings attending the school, proximity to the school, etc.)
 - Results from any required admissions screenings or supplementary requirements (e.g., testing, auditions, essays, etc.)
- For Point-system schools: Top 30% of students with high scores are admitted first by descending order, then Tiers are used, and scores are admitted in descending order
- Can receive a single best offer from **one selective enrollment and one choice school**

1. Student Information	✓
2. Student Address	✓
3. Student Tile Info	
4. Student Grades - ADMIN ONLY	
5. Multiples Information	✓
6. Sibling Information	✓
7. Student of CPS Employee	✓
8. Parent/Guardian Information	✓
9. Additional Information	✓
10. 504 Upload	✓
11. Service Plan Upload	✓
12. Program Selection	✓
13. Event Scheduling	
14. Grade Acknowledgement	✓
15. Signature	✓
16. Before submitting your application, verify that your i...	✓



You will not be able to upload grades. Ms. Moore will be inputting grades/GPA



Where you upload Service Plans/IEPS/504s



Where you add/rank schools



Where you choose a test date and any additional requirements (auditions, interviews)



Fully submit your application to make sure you are registered for a test date (you can go back into your app after to make changes)

CPS UPDATES

- HSAT is now only Reading and Math
- HSAT is now only an hour long
- Tiers are currently still being updated
- Cut-off score rubrics are still being updated
- Please sign up for the newsletter—CPS to email updates around registration time
- Reminder: **submit your application** to register for a test date, you can go back in up until the deadline to make changes

2024-25 Application Cycle Timeline for Non-CPS Students	
GoCPS Application Opens	Wednesday, September 13, 2023
Deadline to Register for HSAT	Friday, October 6, 2023
HSAT Dates for Non-CPS Students	Saturday, October 14, 2023 Sunday, October 15, 2023 Saturday, October 21, 2023
GoCPS Application Closes	Thursday, November 9, 2023
Re-Rank Deadline	Wednesday, November 22, 2023

Register by **October 2nd** to take the **October 14 & October 15** test date

Register by **October 6th** to take the **October 21** test date

- By taking the test on one of these dates, you will receive test scores back before the November 22nd deadline to re-rank

TEST PREP

- **Test prep is 100% optional and a decision made by the family**
- Below are links to test prep companies that SBPS families have used in the past

- Leewood Learning - <https://www.leewoodlearning.com/services>
 - HSPT
- Nurturing Wisdom - <https://nurturingwisdom.com/cps-selective-enrollment/>
 - HSPT, CPS
- Test Prep Chicago - <https://testprepchicago.com/>
 - HSPT, CPS
- World Wise Tutoring - <https://www.worldwisetutoring.com/test-prep-high-school/>
 - HSPT
- Peterson's - <https://www.petersons.com/testprep/high-school-entrance-exams/>
 - HSPT
- Redwood Prep - <https://www.redwoodprep.com/signup/hspt-2023>
 - HSPT

- **Free Practice Tests- HSPT**
 - [Practice HSPT Test Book - Barron's](#)
 - [Practice HSPT 2](#)
 - [Practice HSPT 3](#)



OVERVIEW

- Understand the application process
- Research high school programs
- Subscribe to CPS and school newsletters
 - <https://www.cps.edu/gocps/about-gocps/contact/>
- Register for open houses and shadow days
- Visit school neighborhoods/routes
- Narrow your choices
 - Have a clear list of top 1-4 choices
- Make a list of what is important to your child/what they are looking for in a high school
- Make notes of high schools and what they have to offer
- **Make the most of it**

RESOURCES

- **Catholic High Schools**
 - [Archdiocese Website](#)
 - [School Locator](#)
 - [HS Admissions Info](#)
- **CPS High Schools**
 - [goCPS](#)
 - [Understand rank/cut-off scores](#)
 - [Program guides](#)
 - [Program types](#)
 - [23-24 Cut-off scores \(only to be used as a guide\)](#)
 - [Myth Busters](#)
 - [Application Tips](#)
 - [CPS FAQs](#)
- **St. Bens HS Readiness Page**
 - [Link to HS Page](#)
 - [Link to all High Schools](#)
 - [Test Prep Resources](#)
 - [Letter of Rec Template](#)
 - [Interest Journal](#)



QUESTIONS?

Cblazkow@stbenedict.com